

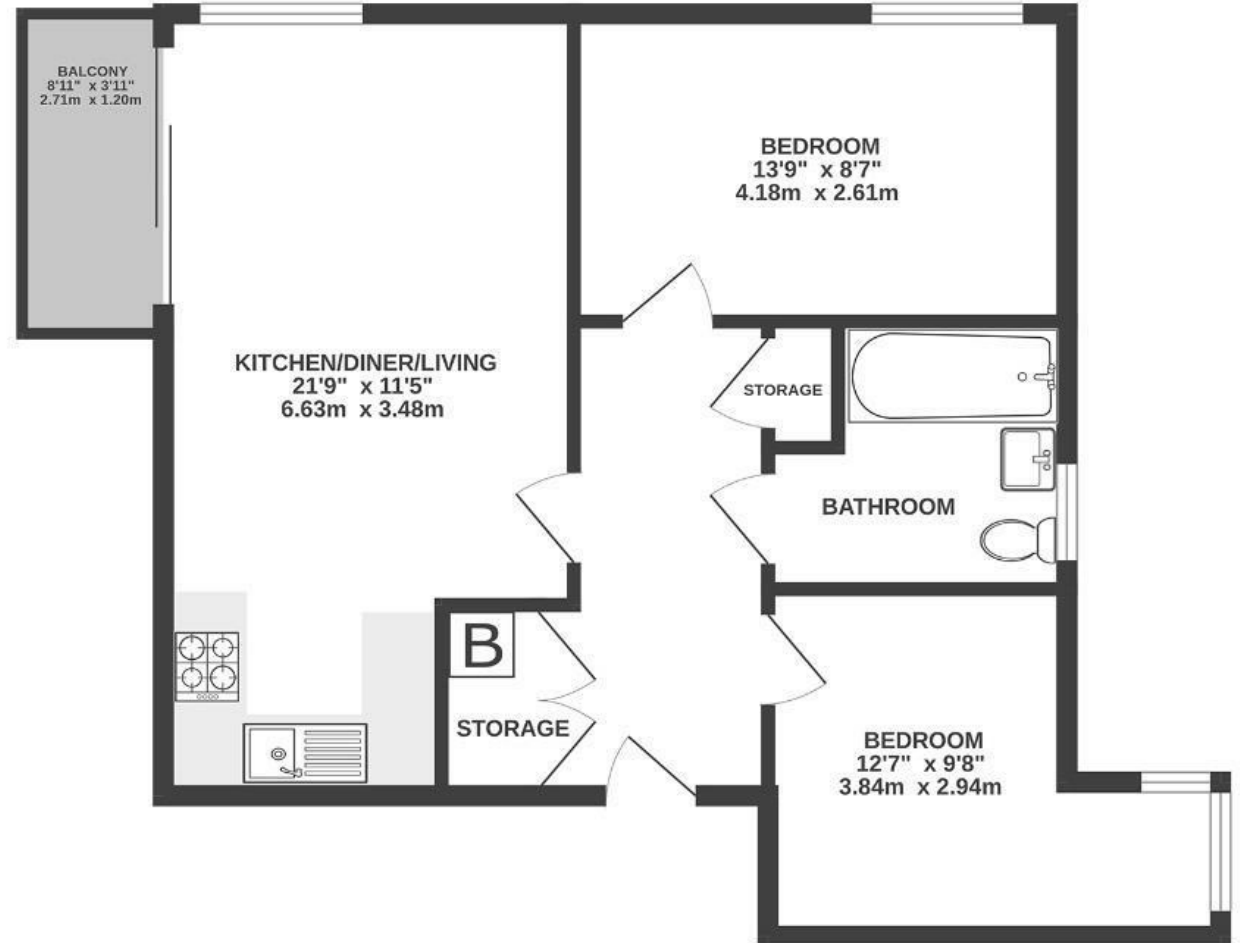
Cooperage Court

SOUTHVILLE

APPROXIMATE FLOOR AREA
56 SQM / 597 SQFT



THIRD FLOOR



Boardwalk

Cooperage Lane

SOUTHVILLE, BRISTOL



£300,000



2 Bedrooms



BS3 1FF



1 Bathrooms

"We love the light and airy feel of the flat, especially the living area and sunny balcony with its open aspect. We've found it a quiet spot, despite being nearby the bustling North St and harbourside. And we really appreciate the low energy bills!"

